

Stormwater policy: reform and implementation



OFFICIAL

We acknowledge and respect Victorian Traditional Owners as the original custodians of Victoria's land and waters, their unique ability to care for Country and deep spiritual connection to it.

We honour Elders past and present whose knowledge and wisdom has ensured the continuation of culture and traditional practices.

DEECA is committed to genuinely partnering with Victorian Traditional Owners and Victoria's Aboriginal community to progress their aspirations.

Snapshot of stormwater reform in recent years



3

Water for Victoria

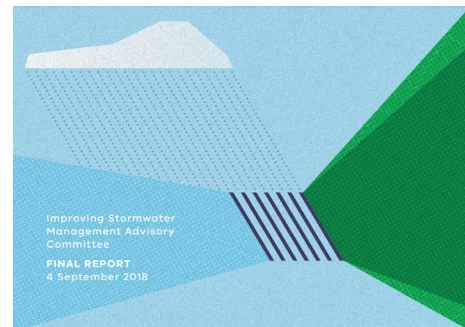
- Chapter 5 – Resilient and liveable cities and towns
- Recognising water’s key role in creating resilient and liveable cities and towns
- Including all elements of the urban water cycle in the way we plan and manage water
- **Action 5.5** - Improve stormwater management for greener environments and healthier waterways
 - amend the VPPs and related building regs to improve stormwater management and associated outcomes
 - leading development of place-based targets for stormwater management
 - complement VPPs and building regs with a mix of other interventions



4

Improving Stormwater MAC

- Heavy focus on planning scheme, managing development
- Planning amendment VC154
- Ongoing training & capacity building on planning requirements
- Laid groundwork for some longer-term projects – e.g. offsets, STORM update



OFFICIAL

5

Healthy Waterways Strategy

- First time waterway management strategy & stormwater strategy combined
- Updated science for stormwater management
- Flow targets for all PPWP catchments
- Co-design process and shared delivery model

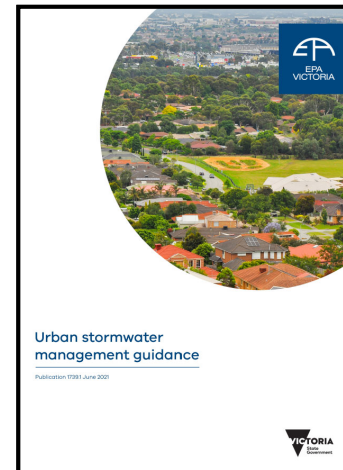


OFFICIAL

6

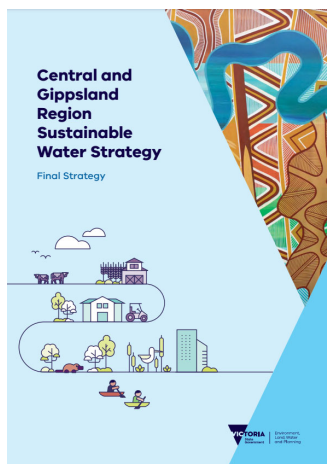
EPA Urban Stormwater Management Guidance

- Focus on managing stormwater volumes
- Reflected/refined flow targets from HWS
- Guidance forms part of state of knowledge (under GED)



OFFICIAL

Central and Gippsland Region SWS



3. Transitioning to manufactured water

As our population grows and river water becomes scarcer, the Central and Gippsland Region will need to reduce its reliance on river water. While water efficiency measures and better use of existing supplies are important, these alone will not meet future demand. Instead, a transition to using more manufactured water (desalinated water, fit-for-purpose recycled water and treated stormwater) will be required to supply our cities and towns.

OFFICIAL

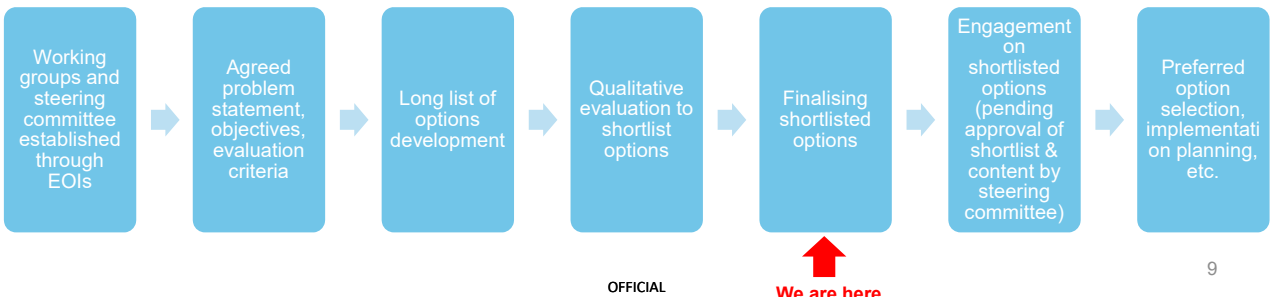
8

Stormwater licensing and supply review

Action 3-12: Improving stormwater regulations to support increased capture and use

The Victorian Government will work with water corporations and councils to review state-wide stormwater licensing and supply arrangements and determine preferred statutory and non-statutory implementation options.

- Stormwater licensing requirements, particularly for council assets
 - *How is stormwater harvesting licensed/accounted for (under entitlements framework or otherwise)?*
- Stormwater supply roles and responsibilities, for all assets/scales of stormwater harvesting
 - *How do we get stormwater to different end users? Should someone be responsible for this supply/delivery function?*



9

Stormwater Offsets framework

Action 3-15: Develop a stormwater offsets framework

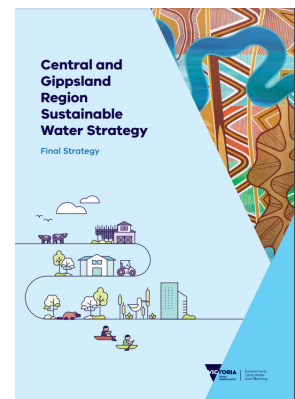
The Victorian Government will develop a stormwater offsets framework to enable robust and consistent application of offsets for developers and local governments to meet stormwater requirements in the Victoria Planning Provisions.



Stormwater quality offsets can provide developers flexibility where stormwater quality obligations cannot be met on-site, by paying a fee to Council to manage the impacts from their development off-site.

Proposed VPP amendment

- To enable more robust, transparent and consistent council schemes, the Minister will release guidance and a calculator tool.
- Existing VPP clause amended to add a *definition* of an offset scheme and require they be developed *in accordance with guidance* issued by the Water Minister.
- The guidance will outline:
 - which types of developments are eligible for offsets
 - stormwater obligations that can be offset
 - financial contribution requirements
 - accountability and reporting requirements for offset income and expenditure



OFFICIAL

10

Stormwater flow targets feasibility study

Action 3-16: Embedding stormwater flow requirements

The Victorian Government will assess and explore the feasibility of options that include flow reduction targets into the Victoria Planning Provisions or other regulations.

The project aimed to answer:



Is it **feasible** to mandate the new EPA stormwater flow objectives in order to improve urban waterway health?

Assess the economic and financial feasibility of implementing interventions required to meet new flow reduction objectives.



Where and how should this be done?

Identify and evaluate a range of regulatory instruments to achieve flow reduction objectives for different development types.

Table 3 Quantitative performance objectives for urban stormwater

| Indicator | Performance objective | | | | |
|---------------------|--|---|--|---|--|
| Suspended solids | 80% reduction in mean annual load (Note:1) | | | | |
| Total phosphorus | 45% reduction in mean annual load (Note:1) | | | | |
| Total nitrogen | 45% reduction in mean annual load (Note:1) | | | | |
| Litter | 70% reduction of mean annual load | | | | |
| Flow (water volume) | Initial load (t/d) | Priority areas (Notes 2, 4, 5, 6) | | Other areas (Notes 3, 4, 5, 6) | |
| | | Harvest/evapotranspire (% mean annual impervious run-off) | Infiltrate/filter (% mean annual impervious run-off) | Harvest/evapotranspire (% mean annual impervious run-off) | Infiltrate/filter (% mean annual impervious run-off) |
| 200 | 93 | 0 | 37 | 0 | |
| 300 | 88 | 0 | 35 | 0 | |
| 400 | 83 | 0 | 33 | 0 | |
| 500 | 77 | 5 | 31 | 4 | |
| 600 | 72 | 9 | 29 | 7 | |
| 700 | 68 | 11 | 27 | 9 | |
| 800 | 64 | 14 | 26 | 11 | |
| 900 | 60 | 16 | 24 | 13 | |
| 1000 | 56 | 18 | 22 | 14 | |
| 1100 | 53 | 19 | 21 | 15 | |
| 1200 | 50 | 21 | 20 | 17 | |
| 1300 | 48 | 22 | 19 | 18 | |
| 1400 | 46 | 23 | 18 | 18 | |
| 1500 | 44 | 25 | 18 | 20 | |
| 1600 | 42 | 26 | 17 | 21 | |
| 1700 | 40 | 27 | 16 | 22 | |
| 1800 | 38 | 28 | 15 | 22 | |

OFFICIAL

11

Central and Gippsland Region SWS

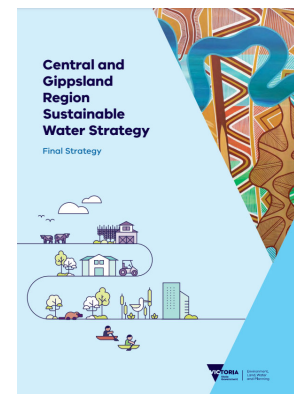
Policy 8-16: Stormwater for the environment

The Victorian Government supports the controlled release of stormwater by an authority, where the authority can demonstrate that it:

- is safe and suitable
- improves waterway health (including flows)
- aligns with advice provided by the waterway manager for timing and volume
- has been identified as a viable option in a catchment-scale or region-specific IWM plan.

Action 8-23: Stormwater for the environment

The Victorian Government will work with Melbourne Water and other project partners to investigate harvesting and using stormwater for the environment, to improve waterway health and provide flows in stressed rivers. We will use the Sunbury and Melton growth areas to explore the possible benefits and enabling policy requirements.



OFFICIAL

12

Where to next?

- VWMS – urban waterway health

Discussion Starter

Developing the new Victorian Waterway Management Strategy



What else?

- How do we keep building on and delivering these and other strategic pieces of work?
 - E.g. to progress flow reduction?
- While also ensuring continuing focus on stormwater quality, full life cycle of assets and stormwater management (inc. erosion and sediment controls)
- Stormwater management in state priority precincts, housing statement, etc.

OFFICIAL

13

Stormwater reform team contact details

For more information, please contact:

- **Licensing and supply review & stormwater for the environment**
Emily.Plymin@deeca.vic.gov.au
- **Stormwater offsets** Maggie.Xipolitos@deeca.vic.gov.au
- **Flow reduction feasibility study** Brigid.adams@deeca.vic.gov.au

Or reach out to any one of us about other projects, ideas or for a general chat – we'll point you in the right direction!

OFFICIAL

14

