

OFFICIAL

Embedding Integrated Water Management (IWM) into practice through collaboration

Clearwater – MW and Local Government Networking Event – 22 October 2024

Shiroma Maheepala, DEECA



Karkarook park, Moorabbin – photo credit: Upula Maheepala

OFFICIAL



We acknowledge and respect Victorian Traditional Owners as the original custodians of Victoria's land and waters, their unique ability to care for Country and deep spiritual connection to it.

We honour Elders past and present whose knowledge and wisdom has ensured the continuation of culture and traditional practices.

DEECA is committed to genuinely partnering with Victorian Traditional Owners and Victoria's Aboriginal community to progress their aspirations.

OFFICIAL

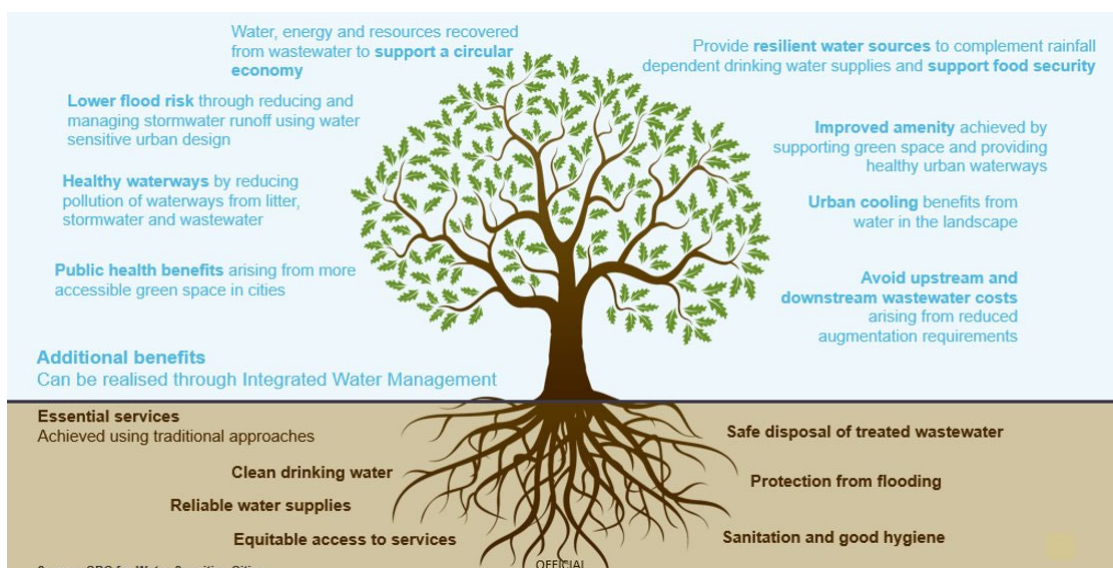
Integrated Water Management

- Integrated water management (IWM) is a holistic approach to managing water that considers the interconnected nature of water and land systems together with the social, cultural, economic, and environmental aspects of water management
- In Victoria, multiple organisations have responsibilities and interests in planning and managing water and land systems:
 - Local Governments
 - Water Corporations
 - Catchment Management Authorities
 - Traditional Owners
 - Planning authorities (e.g. Department of Transport and Planning and Victorian Planning Authority)
 - State government

OFFICIAL



IWM is vital to creating thriving communities



OFFICIAL

Source: CRC for Water Sensitive Cities

OFFICIAL



Policy context for IWM in Victoria

- Water for Victoria, released in 2016 is Victoria's long-term plan for our water resources
- Chapter 5 – Resilient and liveable cities and towns. It recognised water's key role in creating resilient and liveable cities and towns
- Transitioning to Integrated Water Management (IWM) was supported as a key strategy to enhance resilience and liveability of cities and towns across Victoria
 - **Action 5.7** - Represent community values and local opportunities in planning through the adoption of IWM
 - **Action 5.8** - Put integrated water management into practice



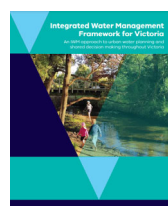
OFFICIAL



Victoria's IWM Program



Actions 5.7 & 5.8
2016



September 2017
Framework to establish the IWM Forums
2017



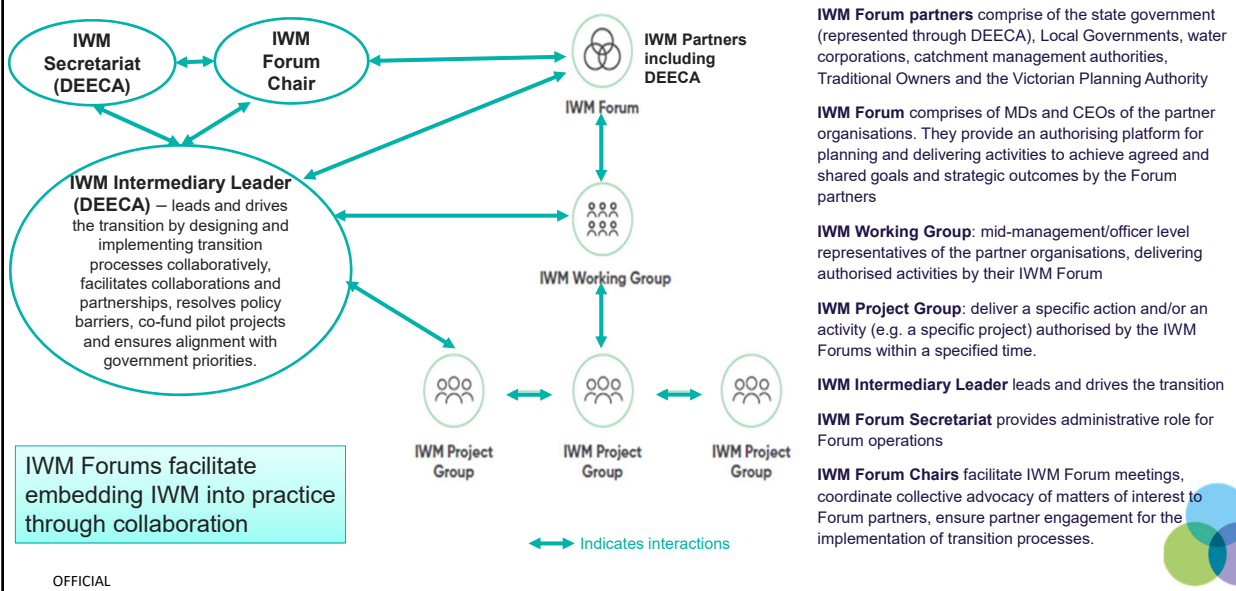
Metro IWM Forums bring 49 organisations to enable collaboration to drive outcomes across the water cycle

- Victoria's IWM Program was established in 2017 to facilitate the implementation of Actions 5.7 and 5.8 (i.e. to facilitate putting IWM into practice)
- *IWM Framework for Victoria (2017)* introduced 'IWM Forum', a new governance model, to enable collaboration to drive multiple outcomes across the water cycle
 - 5 IWM Forums in Metropolitan (Metro) Melbourne – catchment based
 - 10 IWM Forums in regional Victoria – water corporation based

OFFICIAL



IWM Forum governance in Metro IWM Forums



Strategic outcomes aiming to achieve through IWM



Safe, secure and affordable water supplies in an uncertain future



Effective and affordable wastewater systems



Existing and future flood risks are managed to maximise outcomes for the community



Healthy and valued waterways and marine environments



Healthy and valued urban and rural landscapes



Community values are reflected in place-based planning



Jobs, economic benefits and innovation

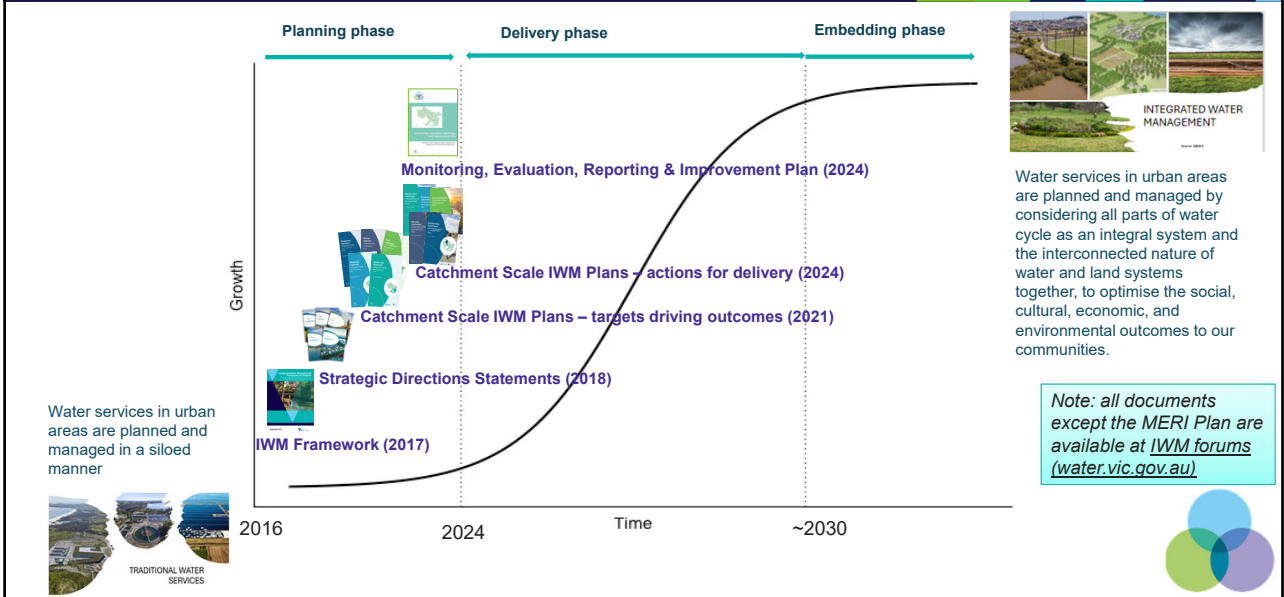


Traditional Owner values, opportunities, and inclusion

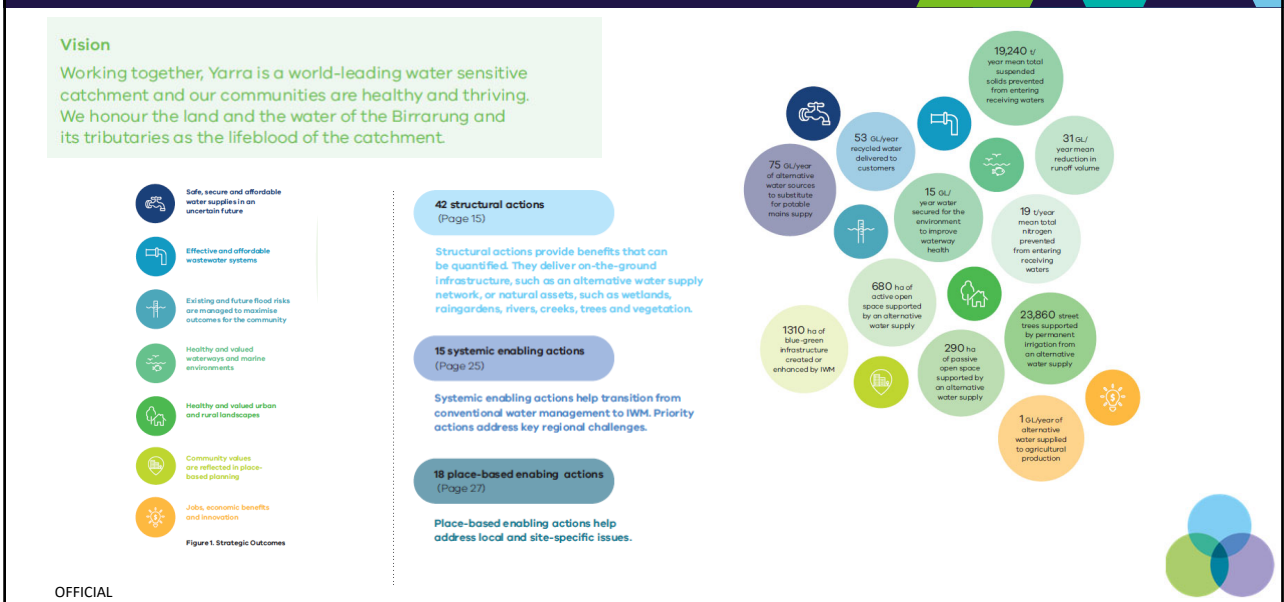
Described in each Forum's Strategic Direction Statement, available at: [IWM forums \(water.vic.gov.au\)](http://water.vic.gov.au)

OFFICIAL

IWM transition phases in Metro Melbourne and key achievements to date



Yarra IWM Forum as an example



OFFICIAL

Metro Melbourne is now in the delivery phase of the transition

IWM Forum partners deliver:

- Key infrastructure projects and priority actions, demonstrating the value of IWM approach
- Processes and targeted guidance to embed IWM culture in their organisations

DEECA continues to lead the transition by:

- Facilitating collaborative processes to:
 - Track the progress towards delivering the strategic outcomes and IWM targets (i.e. IWM MERI Plan implementation)
 - Identify further IWM opportunities to address performance gap against the IWM targets, to inform updating CSIWM Action Plans
- Embedding IWM in broader policy reforms
 - Water supply planning, waterway management, water returns for the Traditional Owners and the environment, peri-urban agriculture, and urban cooling and greening
 - Supporting to improve IWM capacity

OFFICIAL



DEECA continues with delivering the priority enabling policies

- IWM investment framework
- Embedding IWM in urban Planning
- Clarifying roles and responsibilities of partner organisations
- Secure sustainable funding and resourcing to enable Traditional Owners to make decisions and determine IWM priorities on their Country
- Stormwater and recycled water policies

OFFICIAL



THANK YOU!

OFFICIAL

