

HUME CITY COUNCIL

Integrated Water Management Plan Development

Melbourne Water Local Government Networking Event



Introduction

- Previous IWM Plan - lessons learned
- I thought it would take 8 months to draft the strategy - it took 21 months
- Approach - set objectives, workshops, interviews, WSUD masterplan, Sustainability Taskforce
- Agreed goals and actions
- Implementing the Strategy
- Lessons learned for the next strategy

Melbourne Water and Local Government networking
IWM Strategies



Previous Plan

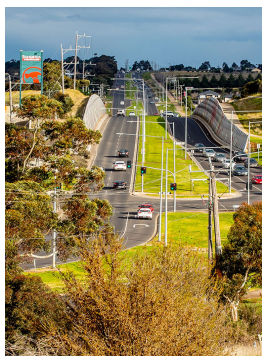
- Rainwater tanks installed at over 30 sites
- WSUD asset audit and establishment of maintenance budget
- Scoped stormwater harvesting schemes but not implemented



Melbourne Water and Local Government networking
IWM Strategies



Developing the new IWM Plan



Overcoming Resistance to IWM

- Maintenance
- High level of detail required for stormwater harvesting schemes - concept designs
- Previous bad experiences informing views
 - SWH doesn't provide any water in summer &/or in a drought
 - WSUD assets don't work
- Don't forget water efficiency and recycled water - these are viewed positively



Approach

- Develop objectives that relate back to the Council Plan
- Workshops with each team
- Sustainability Taskforce
- Thinking ahead to the next plan



Melbourne Water and Local Government networking
IWM Strategies



WSUD Masterplan

- Engaged consultants to complete a WSUD and stormwater harvesting masterplan
- Included all relevant stakeholders in workshops
- Developed top opportunities to concept level and costings to inform budget bid

- Legend**
- New Infrastructure**
 - Outlet Pit
 - Inlet Diversion Pit
 - Electricity Connection
 - Inlet Pipe
 - Tank Transfer Pipe
 - Outlet Pipe
 - Maintenance Access
 - All-weather Access
 - Storage Tank
 - Tank Excavation Extent
 - Pump Shed
 - Wetland
 - Wetland Footprint
 - Sediment Pond
 - Sediment Dry Out Area
 - Melbourne Water Drainage**
 - Pits
 - Pipes
 - Channel
 - Underground Pipe Main

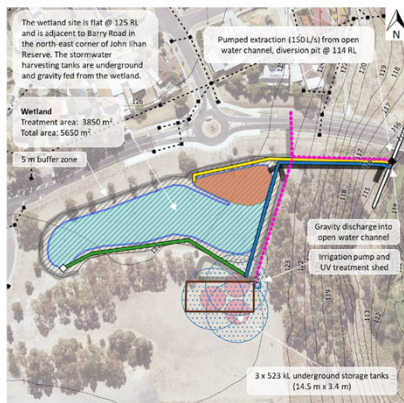


Figure 17 - John Ihan Memorial Reserve - Concept Design Plan

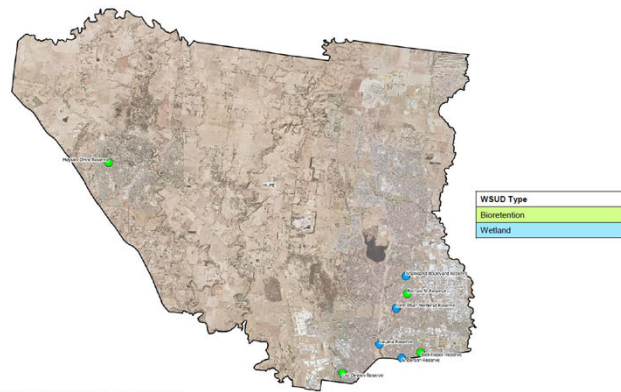


Figure 6 - Hume City Council - Concept Locations

IWM Plan targets



Melbourne Water and Local Government networking
IWM Strategies

Alternative Water Targets

- 61ML/yr of stormwater harvesting by 2030 with 25ML/yr by 2025
- At least 65% of alternative water used to irrigate sporting reserves by 2030

Water efficiency targets for leisure centres

- Less than 10L/patron at Splash by 2025
- Less than 40L/patron at SALC and BALC by 2025



Implementing the Strategy

- Regular reporting on stormwater harvesting project, because they have a budget attached.
- WSUD in Council projects difficult to implement, now a GED requirement. Also, ESD in the planning scheme
- Water metering in leisure centres
- Strategic work implemented, POS irrigation framework, inter-agency IWM plans, industrial pollution, IWM guidelines
- Traditional Owner cultural values
- Passive irrigation of street trees implemented in new estates
- WSUD maintenance improvements



Next IWM Plan

- Align with the Open Space Strategy using framework developed under this plan
- Incorporate Traditional Owner values and priorities
- Larger focus on:
 - industrial pollution
 - ESD in planning scheme
 - planning enforcement